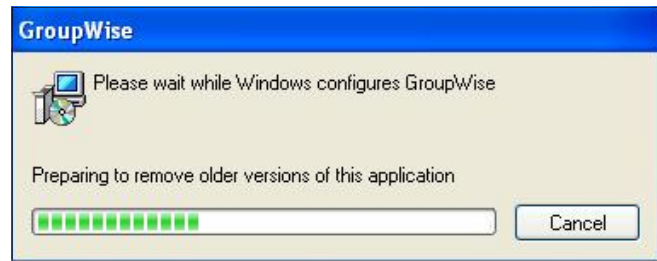


The GroupWise 8 client upgrade will begin shortly after logging into the Novell Network. The following message will appear as the silent install removes the previous version of GroupWise in preparation of installing the upgrade.

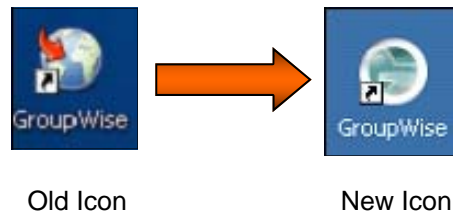


The upgrade will complete in approximately 5-10 minutes, but may take longer in some cases.

***Please do not launch any applications until the upgrade is complete.**

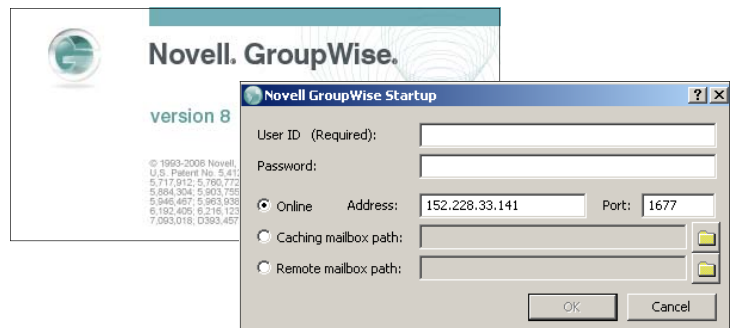
After successful completion of the upgrade, you will notice a new GroupWise desktop icon.

New Desktop Icon.



New Login Screen.

- **Note:** Your **User ID** and **Password** will not change.
- Access to E-Mail, calendars and other resources will remain the same as before the upgrade.



To login to the GroupWise 8 WebAccess Client, open your browser and type the following **link**:

<http://groupwise.valpo.edu>

GroupWise 8 WebAccess Login Screen.

- **New Users:** login with your Valponet User ID and password. **Please Note:** You must first change your password in **Valpo Identity Manager**. See www.valpo.edu/it to access Identity Manager.
- **Note:** If you have previously logged into GroupWise WebAccess your Valponet **User ID** and **Password** have not changed with the new version of GroupWise.



Novell® GroupWise® 8

Username:

Password:

Connection Speed

High (Broadband)

Low (Dial-up)

Use the basic interface [More Information](#)

Remember my settings

Settings << Login

→ Help © Copyright 1993-2008 Novell, Inc. All rights reserved.